

DIAGNOSTIC TECHNIQUES**BACTERIAL CULTURE & SUSCEPTIBILITY****CONTENTS****WHEN DO I DO IT? : 1.1****WHAT CAN I FIND? : 1.1****TECHNIQUE IMAGES : 1.2****WHAT DO I NEED? : 1.2****HOW DO I DO IT? : 1.2****TIP : 1.3****WHEN DO I DO IT?**

- If an animal has failed to respond to an empiric course of therapy at the appropriate dose, administered appropriately, for a sufficient period of time
- If there are draining tracts
- If, after a course of therapy, cutaneous cytology continues to demonstrate bacteria
- If rod-shaped bacteria or a mixed population of bacteria are identified with cutaneous cytology

WHAT CAN I FIND?

- Confirm the presence of bacteria as a part of the pathogenesis of the disease condition (and rule out a sterile pyoderma)
- Obtain information on the appropriate antimicrobial to be used
- Identify any bacteria that may have zoonotic potential

WHAT DO I NEED?

- Bacterial culturette swab for collection of material to be sent to a laboratory for aerobic culture and susceptibility testing

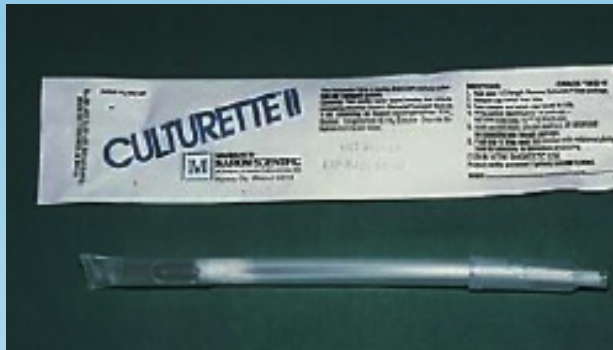
EQUIPMENT VIDEO: [ExcellenceInDermatology.com](#) → [Education Library](#) → [Videos](#)

HOW DO I DO IT?

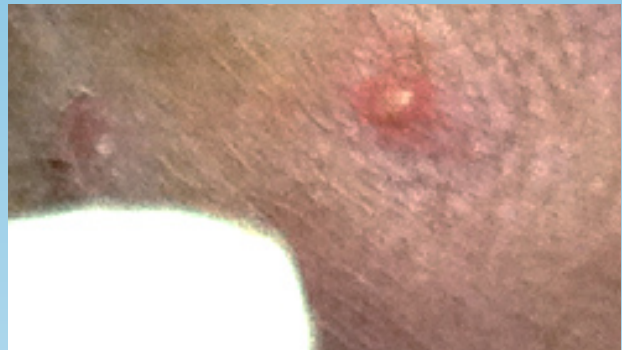
- Take culture material from an intact pustule, the periphery of an epidermal collarettes, inside the depth of a draining tract or the dermal side of a skin punch biopsy
- Rupture an intact pustule with a sterile 25 ga needle and collect the purulent exudate
- Samples are placed into the transport media and sent to the laboratory

PROCEDURE VIDEO: [ExcellenceInDermatology.com](#) → [Education Library](#) → [Videos](#)

TECHNIQUE IMAGES : BACTERIAL CULTURE & SUSCEPTIBILITY



Bacterial culturette tube



ID of an intact pustule to be sampled



Rupture of the pustule with a sterile needle



Sampling of the purulent material from the ruptured pustule

TIP

- Don't clean or prep the surface of a pustule prior to sampling as this may rupture the pustule
- Interpret the culture results in light of the clinical condition
- If more than 1 bacterial organism has been isolated, choose an antibiotic that has efficacy against the more important skin pathogen, *Staphylococcus pseudintermedius*